



A GUIDE TO CREATING MELBOURNE'S FINEST GARDENS

Inspiration, insights and resources
to help you create your ideal garden
so you can live the life
you've always dreamed of living.



WHYTE
GARDENS

IMAGINE THE POSSIBILITY

Close your eyes and imagine your ideal garden. Can you picture how beautiful it will look as you gaze out over it? Can you hear the sounds of children playing in the pool or the morning song of the birds? Can you smell the fragrance of the flowers or the enticing aromas emanating from the pizza oven? You can? Great – then you are already well on your way to creating it...

“Until one is committed, there is hesitancy, the chance to draw back, always ineffectiveness. Concerning all acts of initiative and creation, there is one elementary truth the ignorance of which kills countless ideas and splendid plans: that the moment one definitely commits oneself, then providence moves too.

All sorts of things occur to help one that would never otherwise have occurred. A whole stream of events issues from the decision, raising in one's favour all manner of unforeseen incidents, meetings and material assistance which no man could have dreamed would have come his way. I have learned a deep respect for one of Goethe's couplets: Whatever you can do or dream you can, begin it. Boldness has genius, power and magic in it. Begin it now.”

WILLIAM HUTCHISON MURRAY,
THE SCOTTISH HIMALAYAN EXPEDITION

WHAT DEFINES THE FINEST GARDENS?

There are many attributes that go into making a garden one of the finest.

We believe that the finest gardens:

1. Are greatly admired for their beauty.
2. Are admired for a long period of time.
3. Exude a kind of gravitational pull which draws people to want to spend time in them.
4. Offer a high degree of functionality and enjoyment.
5. Demonstrate creativity by incorporating new forms and combinations in their designs.
6. Are created using highly sophisticated materials.
7. Demonstrate cleverness in their planting arrangements.
8. Are imbued with the power, glory and wonder of nature.
9. Will continue to delight in the future as much as they did on the day they were created.
10. Are an expression of authenticity by those who first conceived them.
11. Are emulated by others, who desire to create their own versions of them.
12. Exist because the owner has a desire to share their beauty and their bounty with others.



A LITTLE GIRL'S DREAM

Our client desired a garden with a pool that would entice her grand daughters to come swim at her house. So we included a beach area in the pool, just for them.

They also wanted the pool to feel connected to the house via the BBQ and alfresco dining area allowing a smooth transition from one area to the next.

Authenticity & functionality were the hallmarks of this project.

Longevity. Recently we returned to walk through this space, 8 years after it was created, and it looks even better now.



NATURE ON DISPLAY

Nestled in the hills of Ferntree Gully, this garden is a fine example of nature at its best.

When considering the plants for your garden, ensure you allow for adequate amounts of green, with contrasting shapes or shades, to create a visually pleasing display that you will **admire**.

We designed and landscaped this home to tame nature yet allow it to also flourish.

PLANTS ARE THE STARS OF ANY GARDEN

GRAVITATIONAL PULL

Created just prior to Covid, this Malvern property makeover consisted of pool & spa; outdoor kitchen/dining area; TV and fireplace along with overhead heaters and comfy couches.

When the pandemic hit, it became the much loved and much used haven it was always destined to be.

As the owner said, "This was our sanctuary for the family. Every night we went outside and spent time together. It was great for that."





A PLACE TO RELAX

The pool and spa in this McCrae holiday home was part of the brief for a Balwyn family who longed to enjoy weekends on the Mornington Peninsula.

Time out is something we all desire, perhaps you do too. When considering your garden, always include space for you to ground yourself. This may be a secluded corner in which to read a book, a veggie garden to let you exercise your green thumbs, or a shed for you to tinker in.

Consider a garden that allows for some alone time.

A POOL ADDS MEMORIES



CURVES FOR COMFORT

Authenticity is one of the criteria for a fine garden. This gorgeous house in Hawthorn had a 100 year old Kurrajong tree under which we added circles of lush green lawn.

The clients wanted an inviting and inclusive space where their guests could mingle. And what could be more inclusive than circles?

These round grassed areas were authentic to who the client was and what they wanted.

Ask yourself – what would feel authentic to you?

CURVES ARE WHAT NATURE DOES BEST

CONNECTION

Ultimately, wellbeing is what a garden should really be all about.

When considering your garden, think about how you would like to spend time with others in your garden?

What would your friends and family love to see included in your garden plans? How do you like to spend time with others?

Some of our best memories are created in a garden, spending time with those who are closest to us.



WHAT IS THE PROCESS THAT LEADS TO CREATING THE FINEST GARDENS?

Fine gardens do not just happen.

They are created by those endowed with the skill, vision, creativity and expertise to bring them into being.

For 30+ years, the team at Whyte Gardens have followed a disciplined, proven and successful 7-step process in creating over 550 gardens for our clients.

Step 1. Introduction

Step 2. The Brief

Step 3. Concept Design

Step 4. Master Plan

Step 5. Preparation

Step 6. Contract

Step 7. Landscaping





PROCESS – STEP 1



INTRODUCTIONS

Your design consultation is where it all starts. You share your ideas, hopes & dreams with us, ask questions, and invite your designer to share their insights.

This is a time of discovery – where we both find out more about each other to help evolve the partnership that will guide our shared journey to your ideal garden.

CONSULTATION – A TIME OF
DISCOVERY



PROCESS - STEP 2

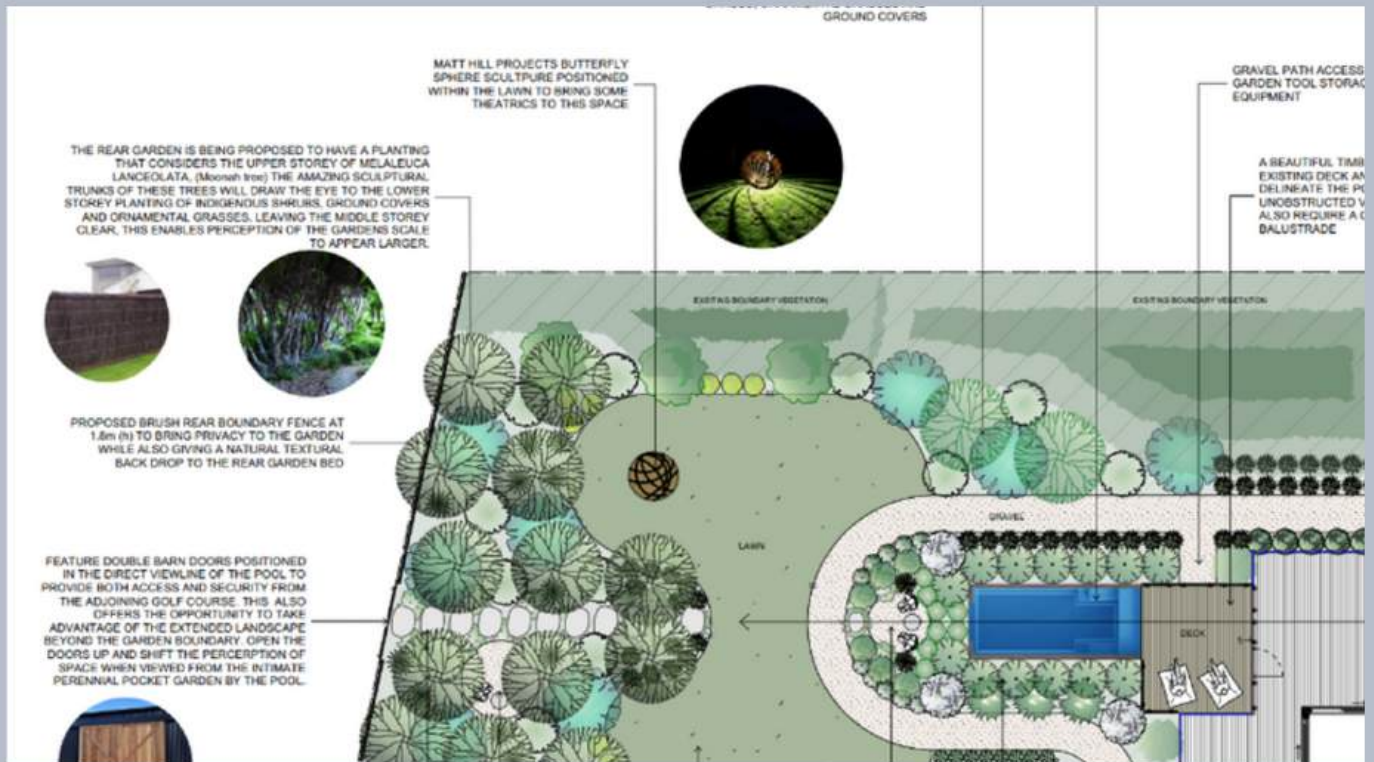


YOUR BRIEF

Once you engage us, your designer will work with you to generate a brief that will form the basis of your design.

We encourage the use of tools like Pinterest to enable the sharing of ideas between us and you.

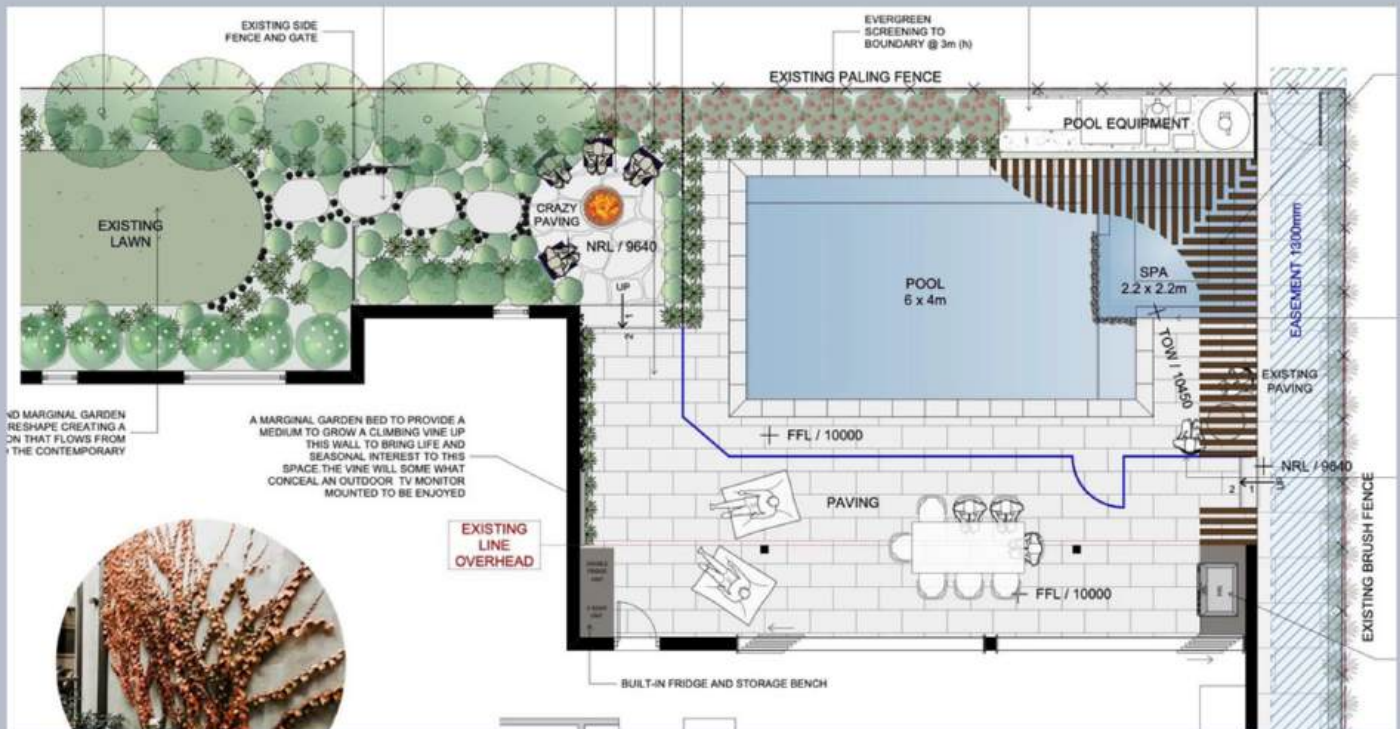
THE BRIEF - IDEAS
EXPRESSED ON PAPER



CONCEPT DESIGN

The Concept Design stage allows for your ideas to be poured out onto paper, showing the layout and inclusion of all key elements in your future garden.

This stage provides the perfect opportunity for your designer to show you how all your ideas can be played out.



MASTER PLAN

The Concept Design is broad and general in nature. The next step is your Master Plan.

This details all the exact materials, finishes and plants etc to be used in creating your garden. It also allows for an accurate costing to be formulated.



PROCESS - STEP 6



CONTRACT SIGNING

The moment arrives. You will receive your contract to sign and schedule a start date.

Your contract provides many protections for you as we are registered builders.

ITS REALLY HAPPENING



PROCESS - STEP 7



LANDSCAPING

The work begins. Your ideal garden begins to take shape.

It all happens under the watchful eye of our project manager who will co-ordinate all actions

with you to minimise disruption during construction.

Before you know it, your garden is ready to enjoy.

BUILD IT AND THEY WILL
COME



THE TIME TO ENJOY

Your new garden is a place to play in, to relax in, to entertain in and to create treasured memories that will last a lifetime.



THE AIM OF EVERY PROJECT IS A GARDEN
YOU WILL LOVE



MAKE AN ENTRANCE

The entrance to your home should set the mood for what's to come.

A garden should always make you feel like you are being welcomed home.

SOPHISTICATION

It's all the small details that make something look and feel right..



AN IMPORTANT
ELEMENT OF ANY
FINE GARDEN

SUPPLIERS

ECO OUTDOOR

We choose our suppliers with us much careful consideration as you make in choosing us.

For 20 years now, we have been purchasing stone from Eco Outdoor. They have arguably one of the best showrooms around. A visit will be worth your while.

Look, feel, touch the stonework and you will feel your senses coming alive with inspiration.

“AMAZING SHOWROOM”



SUPPLIERS

LIMETREE ALFRESCO

When it comes to outdoor kitchens we always invite Adam, the owner, to get involved.

He will tailor a kitchen design to include exactly what you wish and how you want it to look.

We of course work in close consultation to advise how the finished kitchen will work with your overall garden design.

OUTDOOR COOKING
REIMAGINED



SUPPLIERS

LAGUNA POOLS

Once your initial concept design has been created, it's time find the right pool company for you.

We happily work with many pool companies, however Laguna has grown to be a favourite over the years.

You simply cannot beat them for personally designed concrete pools, tailored to your individual needs.

EXCEPTIONAL
CONCRETE POOLS



SUPPLIERS

LEISURE POOLS

If your garden design (or your budget) calls for a fibreglass pool, we can recommend you chat to Leisure Pools.

They have an exceptional range of pools in every size, shape and style.

It's best to talk with them as soon as you have a design. We will liaise with them throughout the project to ensure a stunning pool for you.

FABULOUS FOR
FIBREGLASS POOLS





POWER OF PLANTS

The finest gardens have plants as their stars.





CUSTOM CREATED

When you add a custom feature to your garden it becomes an expression of authenticity of who you are.

This curved pergola we created for this Brighton project added the element of additional visual interest the owners were searching for.

PRIVACY

The Secret Garden may be a fantasy story but there is an element of it to consider for your own garden.

Adding screening creates more privacy, allowing your garden to have a more intimate feeling away from prying eyes.

It also adds an element of discovery, every time you walk around the corner.



NOW IMAGINE YOUR GARDEN

Imagine all that you can, without limits.

We always find the finest gardens begin by allowing all possibilities to flow in the beginning and dismissing nothing.

Please place no constraints on your imaginings.

We can help you realise the garden of your dreams, sometimes in ways you had not thought of.

If you dream of the finest garden and have to compromise a little, wouldn't it still be an amazing garden?

We look forward to the chance of helping you make your dream garden become a reality.



THANK YOU

We hope you found this guide a source of inspiration and understanding for you to create one of Melbourne or the Mornington Peninsula's finest gardens.

QUESTIONS?

www.whytgardens.com.au

